



www.masterlockatwinch.com  
Order: 866-835-0628  
Phone: 712-338-2974  
FAX: 800-245-7569  
E-MAIL: masterlock@cyclecountry.com

# **BOMBARDIER**

## **WINCH KIT**

### **Installation Instructions**

# **KIT NUMBER: 20-7060**



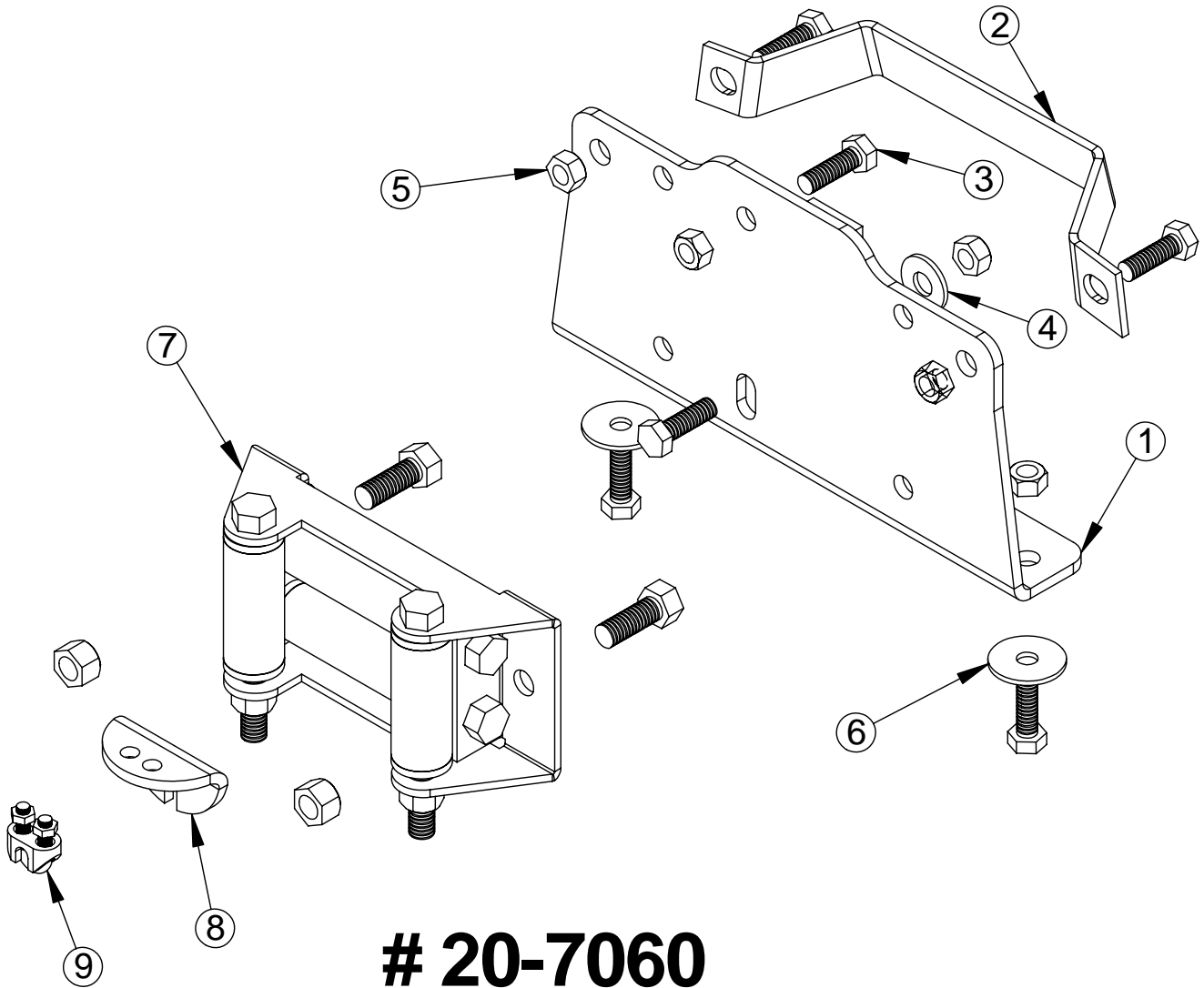
www.masterlockatwinch.com  
Order: 866-835-0628  
Phone: 712-338-2974  
FAX: 800-245-7569  
E-MAIL: masterlock@cyclecountry.com

## **ONE YEAR LIMITED WINCH MOUNT WARRANTY**

For the period of one year from the purchase date Master Lock will replace for the original purchaser, free of charge, any part or parts, when found, upon examination by Master Lock, to be defective in material, workmanship, or both.

All transportation cost incurred by the purchaser in submitting the material to Master Lock for replacement under this warranty, must be borne by the purchaser. If Master Lock determines that the product must be returned to the factory for credit please call 1-866-835-0628 for an RMA number and shipping instructions.

The warranty does not apply to parts that have been damaged by accident, alteration, abuse, improper lubrication, normal wear, or other causes beyond Master Lock's control.



## # 20-7060 Parts List

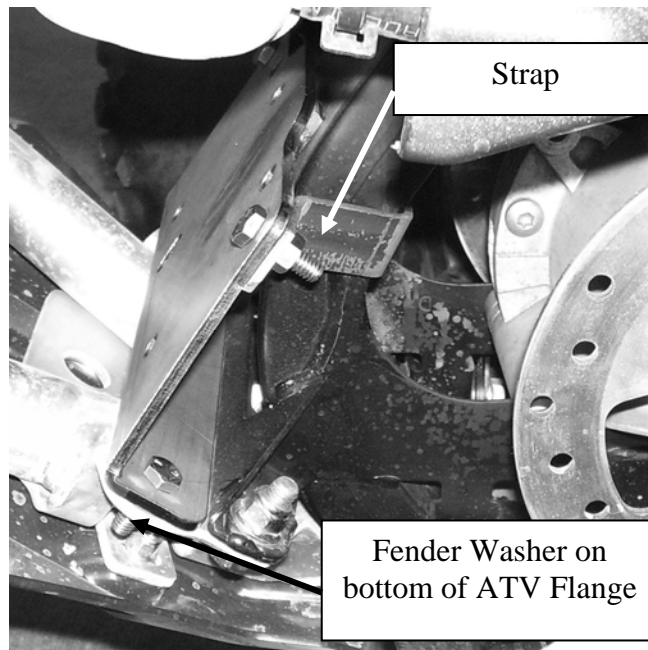
ITEM NO.	QTY.	PART NO.	DESCRIPTION
1	1	CYC5452	Winch Mount Weldment
2	1	CYC5453	Strap
3	6	PUR1155	5/16" x 1" Bolt
4	1	PUR1244	5/16" Flat Washer
5	6	PUR1275	5/16" Nylock Nut
6	2	PUR1227	5/16" Fender Washer
7	1	11044	Roller Hawse Assembly
8	1	CYC0882	Cable Stop
9	1	PUR1606	3/16" Cable Clamp

**Refer to the winch manual for winch mounting instructions.**

**KIT #20-7060**

**WINCH MOUNT INSTALLATION INSTRUCTIONS**

1. Remove two front 10mm bolts and two bottom 6mm bolts on the front plastic shroud (there will be two remaining 6mm bolts that attach the front plastic bumper to the front body plastic).
2. Using the 5/16" x 1" bolts, mount the Winch to the Winch Mount Plate. Be sure that when the Winch is mounted to the ATV the Winch Motor is on the **LEFT** side of the machine. Mount Winch to Winch Mount Plate using the center two hole positions and positioning the bolt head of the top hole so that the bolt head is on the same side as the spacer that is welded onto the back of the Winch Mount Plate. (See Parts List) Use washer on slotted hole as shown in Parts List.
3. Mount Winch and Winch Mount Plate to the ATV using two 5/16" x 1" Bolts, two 5/16" Nylock Nuts and two 5/16" Fender Washers. The 5/16" Fender Washers go on the bottom of the ATV mounting flange. See picture below. Shown without winch mounted for clarity.



4. Mount Strap to the top of the Winch Mount Plate and around the center steel frame that the Winch Mount Plate is resting against using two 5/16" x 1" Bolts and two 5/16" Nylock Nuts. See picture above.

5. Re-install front plastic bumper starting with the two inside 6mm bolts and nuts. At this time feed the cable and clevis through the Roller Hawse and mount the Roller Hawse using the two 10mm front bolts taken off earlier from the front. Now bolt two bottom 6mm bolts and nuts.



**When using the winch to raise and lower a blade a cable stop must be installed.**

Carefully raise the blade until the top of the push tube's are no closer than 1" anywhere on the ATV. Place the Cable Stop onto the Winch Cable up against the Winch Hawse. Secure the Cable Stop to the Winch Cable using the Cable Clamp Assembly as shown in the pictures below.

