



www.masterlockatwinch.com
Order: 866-835-0628
Phone: 712-338-2974
FAX: 800-245-7569
E-MAIL: masterlock@cyclecountry.com

BOMBARDIER

WINCH MOUNT KIT

Installation Instructions

KIT NUMBER: 20-7030

Master Lock®



www.masterlockatwinch.com

Order: 866-835-0628

Phone: 712-338-2974

FAX: 800-245-7569

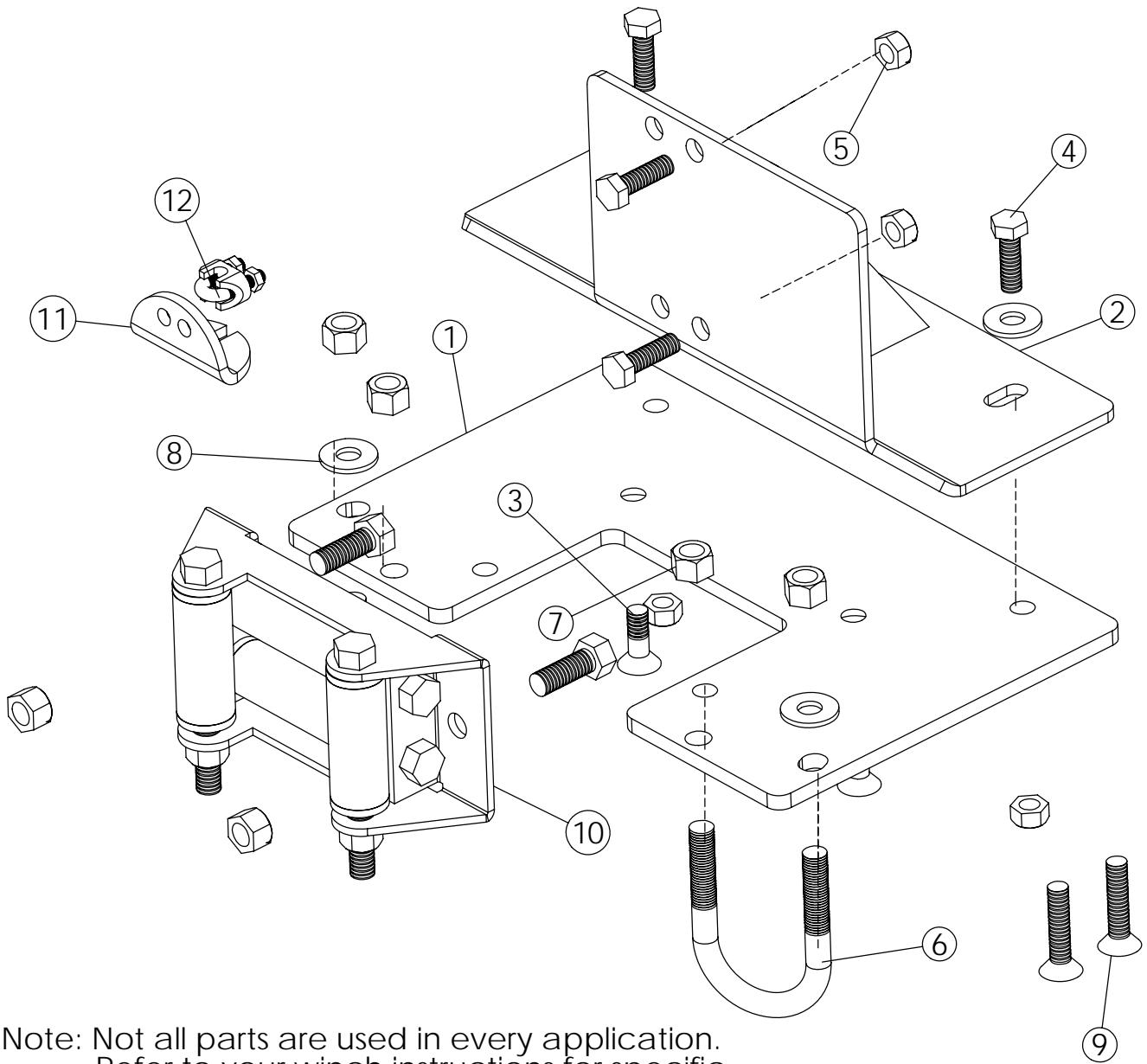
E-MAIL: masterlock@cyclecountry.com

ONE YEAR LIMITED WINCH MOUNT WARRANTY

For the period of one year from the purchase date Master Lock will replace for the original purchaser, free of charge, any part or parts, when found, upon examination by Master Lock, to be defective in material, workmanship, or both.

All transportation cost incurred by the purchaser in submitting the material to Master Lock for replacement under this warranty, must be borne by the purchaser. If Master Lock determines that the product must be returned to the factory for credit please call 1-866-835-0628 for an RMA number and shipping instructions.

The warranty does not apply to parts that have been damaged by accident, alteration, abuse, improper lubrication, normal wear, or other causes beyond Master Lock's control.



Note: Not all parts are used in every application.
Refer to your winch instructions for specific requirements.

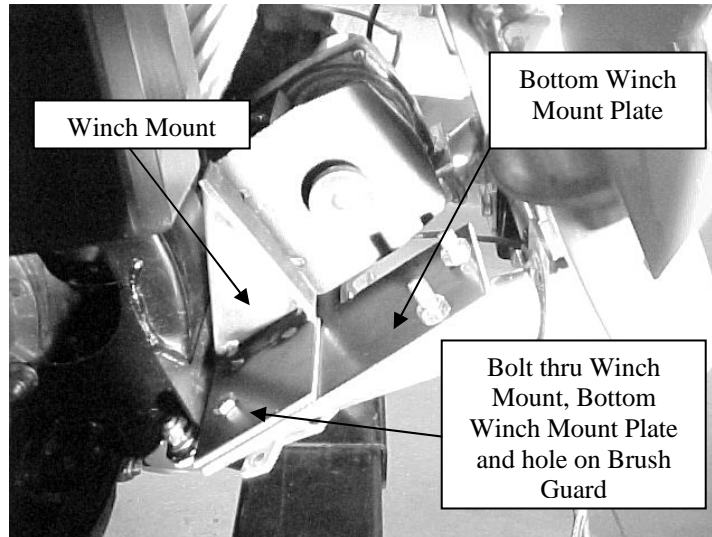
#20-7030 Parts List

ITEM NO.	QTY.	PART NO.	DESCRIPTION
1	1	CYC4441	Bottom Winch Mount Plate
2	1	CYC4444	Winch Mount
3	2	PUR1325	5/16" x 3/4" Flat Head Bolt
4	4	PUR1155	5/16" x 1" Bolt
5	4	PUR1275	5/16" Nylock Nut
6	2	PUR1415	3/8" X 1 1/2" X 2 1/2" U-Bolt
7	4	PUR1272	3/8" Nylock Nut
8	4	PUR1244	5/16" Flat Washer
9	2	PUR1926	8mm x 25mm Flat Head Bolt
10	1	11044	Roller Hawse Assembly
11	1	CYC0882	Cable Stop
12	1	PUR1606	3/16" Cable Clamp

Refer to the winch manual for winch mounting instructions.

**KIT #20-7030
WINCH MOUNT INSTALLATION INSTRUCTIONS**

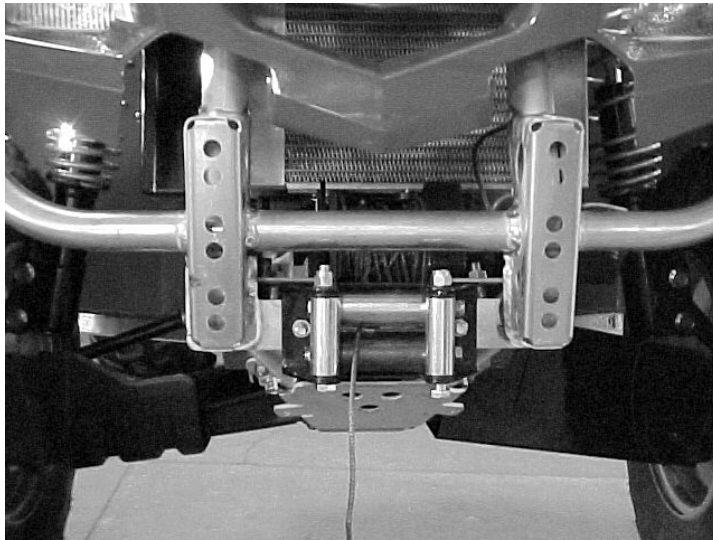
1. Remove front bumper guard to ease installation.



2. Place the Bottom Winch Mount Plate on top of the bottom two brush guard tubes as shown in the picture above.
3. Position the Winch Mount on top of the Bottom Winch Mount Plate as shown in the picture above and attach the Winch Mount to the Bottom Winch Mount Plate with two 5/16" x 1" Bolts. (The two 5/16" x 1" bolts will bolt into existing bolt holes on the brush guard.) ***Do not fully tighten all attaching hardware at this time.***
4. Attach the front of the Bottom Winch Mount Plate to the bottom two brush guard tubes with two 3/8" x 1-1/2" x 2-1/2" U-Bolts. ***Do not fully tighten all attaching hardware at this time.***
5. Using two 5/16" x 1" bolts, mount the Winch to the Winch Mount Bracket, using the two holes to the right. Be sure that when the Winch is mounted to the ATV, the Winch Motor is on the **LEFT** side of the machine. (The two 5/16" x 3/4" Flat Head Bolts or two 8mm x 25mm Flat Head Bolts are not used in this application).
6. Attach the Roller Hawse Assembly to the front of the ATV brush guard with two 3/8" x 1" bolts.

Remove one of the long rollers and the two side rollers and feed the winch cable through the roller hawse. Reinstall the rollers and be sure rollers move freely.

Tighten attaching hardware at this time.



***CAUTION**

**BE AWARE OF WHEN THE CABLE STOP CONTACTS THE ROLLER HAWSE AS CABLE IS WOUND IN.
FAILURE TO RELEASE MAY CAUSE DAMAGE TO WINCH PARTS OR TO THE ATV.**

When using the winch to raise and lower a blade a cable stop must be installed.

Carefully raise the blade until the top of the push tube's are no closer than 1" anywhere on the ATV. Place the Cable Stop onto the Winch Cable up against the Winch Hawse. Secure the Cable Stop to the Winch Cable using the Cable Clamp Assembly as shown in the pictures below.

