



www.masterlockatwinch.com  
Order: 866-835-0628  
Phone: 712-338-2974  
FAX: 800-245-7569  
E-MAIL: masterlock@cyclecountry.com

# **SUZUKI Vinson**

## **WINCH KIT**

### **Installation Instructions**

**KIT NUMBER: 20-4202**



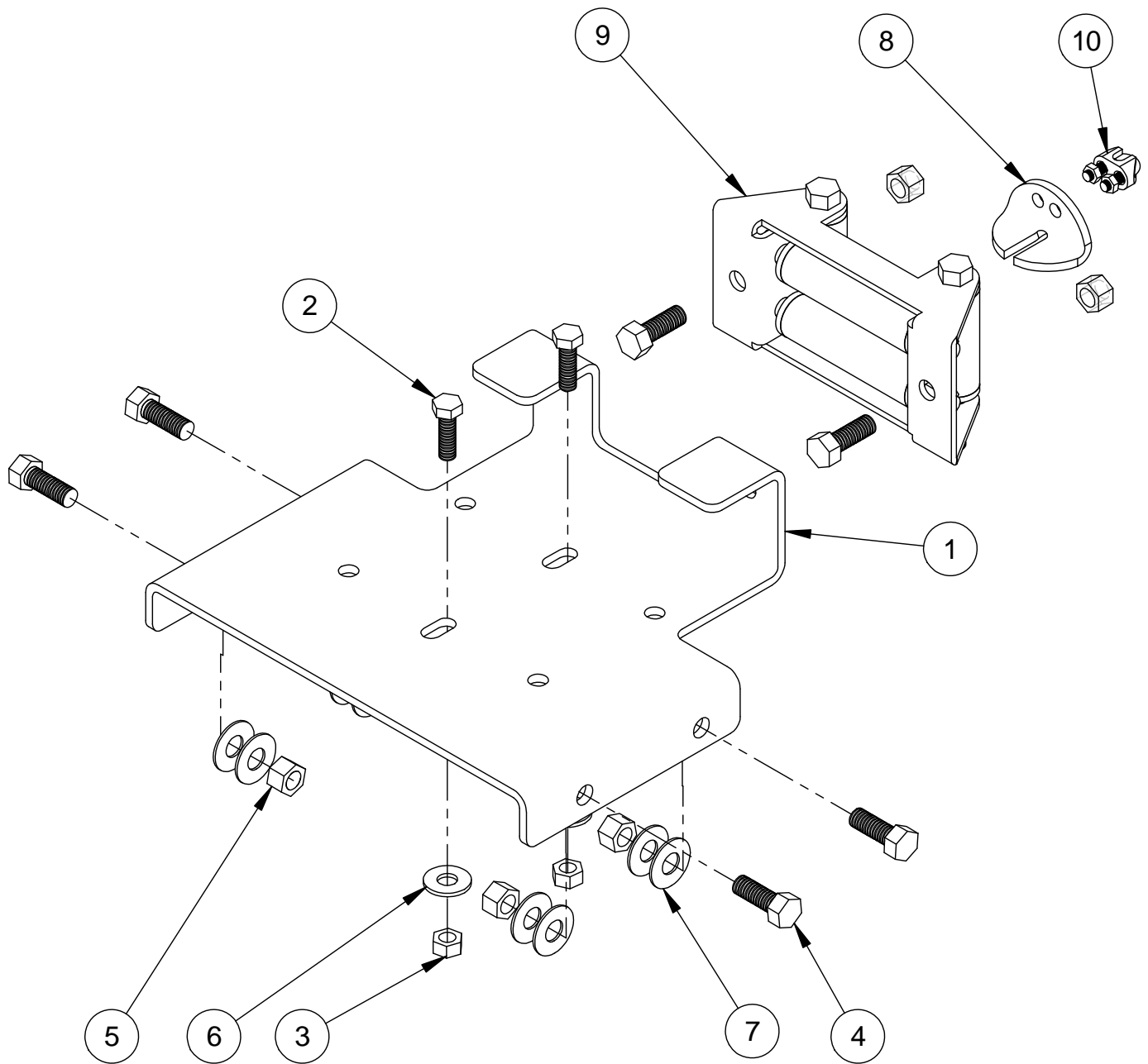
www.masterlockatwinch.com  
Order: 866-835-0628  
Phone: 712-338-2974  
FAX: 800-245-7569  
E-MAIL: masterlock@cyclecountry.com

## **ONE YEAR LIMITED WINCH MOUNT WARRANTY**

For the period of one year from the purchase date Master Lock will replace for the original purchaser, free of charge, any part or parts, when found, upon examination by Master Lock, to be defective in material, workmanship, or both.

All transportation cost incurred by the purchaser in submitting the material to Master Lock for replacement under this warranty, must be borne by the purchaser. If Master Lock determines that the product must be returned to the factory for credit please call 1-866-835-0628 for an RMA number and shipping instructions.

The warranty does not apply to parts that have been damaged by accident, alteration, abuse, improper lubrication, normal wear, or other causes beyond Master Lock's control.



## # 20-4202 Parts List

ITEM NO.	QTY.	PART NO.	DESCRIPTION
1	1	CYC5406	Winch Mount Plate
2	2	PUR1155	5/16" x 1" Bolt Gr 5
3	2	PUR1275	Locknut 5/16" Nylock
4	4	PUR1140	3/8" x 1" Bolt
5	4	PUR1272	Nut 3/8" Nylock
6	2	PUR1244	5/16" Flatwasher
7	8	PUR0250	3/8" Flatwasher
8	1	CYC0882	Cable Stop
9	1	11044	Roller Hawse Assembly
10	1	PUR1606	3/16" Cable Clamp

**Refer to the winch manual for winch mounting instructions.**

All directions referring to right and left are when the rider is sitting on the machine.

**WINCH MOUNT INSTALLATION INSTRUCTIONS  
#20-4202**

1. To ease installation, loosen the bolts holding the brush guard and remove the brush guard.
2. Attach the winch mount plate to the tabs welded on the lower section of the bumper tubing with the supplied 3/8" bolts and nylock nuts. Some applications may require the use of the 3/8" flatwashers included in this kit as spacers.
3. Using the 5/16" x 1" bolts, mount the winch to the winch mount plate. Be sure that when the winch is mounted to the ATV, the winch motor is on the **LEFT** side of the machine.
4. Remove one of the long rollers and the two side rollers and feed the winch cable through the roller hawse. Reinstall the rollers and be sure rollers move freely.
5. Attach the roller hawse to the roller hawse mount plate using the 3/8" x 1" bolts and nylock nuts provided with the winch. Tighten all hardware.
6. Re-install the brush guard.

**\*CAUTION**

**BE AWARE OF WHEN THE CABLE STOP CONTACTS THE ROLLER HAWSE AS CABLE IS WOUND IN.**

**FAILURE TO RELEASE MAY CAUSE DAMAGE TO WINCH PARTS OR TO THE ATV.**

**When using the winch to raise and lower a blade a cable stop must be installed.**

Carefully raise the blade until the top of the push tube's are no closer than 1" anywhere on the ATV. Place the Cable Stop onto the Winch Cable up against the Winch Hawse. Secure the Cable Stop to the Winch Cable using the Cable Clamp Assembly as shown in the pictures below.

