



www.masterlockatwinch.com
Order: 866-835-0628
Phone: 712-338-2974
FAX: 800-245-7569
E-MAIL: masterlock@cyclecountry.com

KAWASAKI

WINCH

MOUNT KIT

Installation

Instructions

KIT NUMBER: 20-2160

Master Lock®



www.masterlockatvwinch.com

Order: 866-835-0628

Phone: 712-338-2974

FAX: 800-245-7569

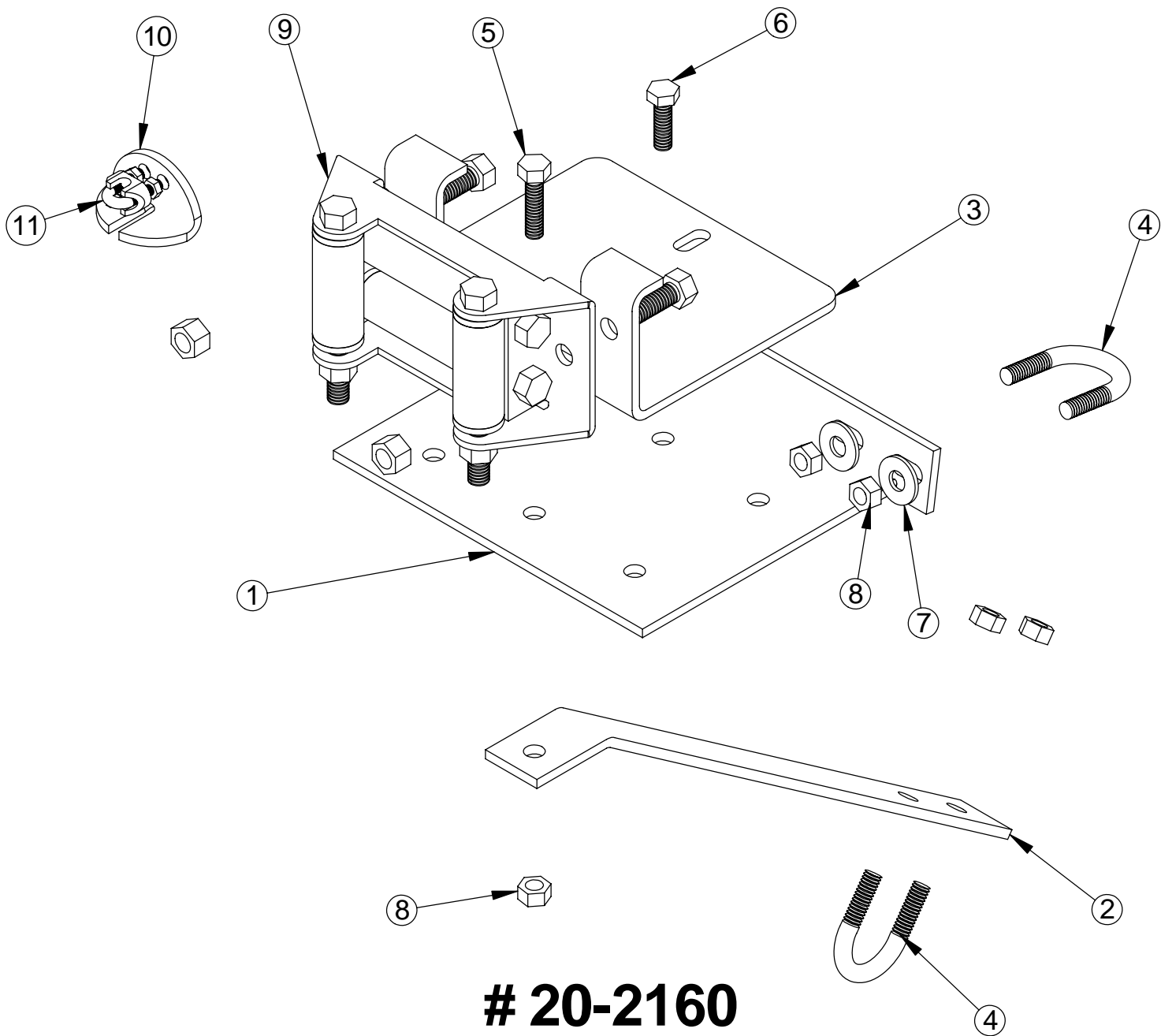
E-MAIL: masterlock@cyclecountry.com

ONE YEAR LIMITED WINCH MOUNT WARRANTY

For the period of one year from the purchase date Master Lock will replace for the original purchaser, free of charge, any part or parts, when found, upon examination by Master Lock, to be defective in material, workmanship, or both.

All transportation cost incurred by the purchaser in submitting the material to Master Lock for replacement under this warranty, must be borne by the purchaser. If Master Lock determines that the product must be returned to the factory for credit please call 1-866-835-0628 for an RMA number and shipping instructions.

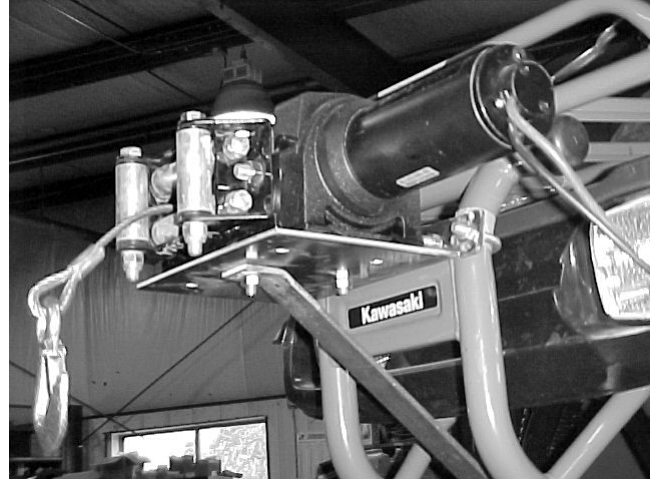
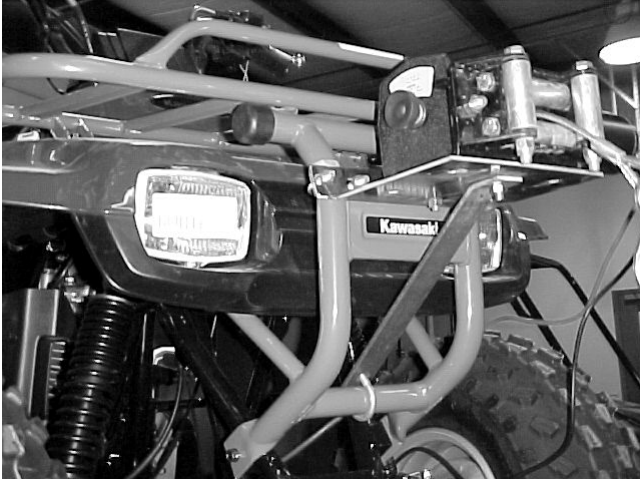
The warranty does not apply to parts that have been damaged by accident, alteration, abuse, improper lubrication, normal wear, or other causes beyond Master Lock's control.



20-2160 Parts List

ITEM NO.	QTY.	PART NO.	DESCRIPTION
1	1	CYC4225	Plate Winch Mount
2	1	CYC4226	Support, Lower
3	1	CYC5318	Roller Hawse Mount Plate
4	3	PUR1421	5/16" x 1-1/8" x 1-3/4" U-Bolt
5	1	PUR1158	5/16" x 1-1/4" Bolt
6	1	PUR1155	5/16" x 1" Bolt
7	4	PUR1244	5/16" Flatwasher
8	8	PUR1275	Nut 5/16" Nylock
9	1	11044	Roller Hawse Assembly
10	1	CYC0882	Cable Stop
11	1	PUR1606	3/16" Cable Clamp

Refer to the winch manual for winch mounting instructions.



20-2160

WINCH MOUNT INSTALLATION INSTRUCTIONS

1. Center the winch mount plate on the front bumper. Attach using two 5/16" x 1-1/8" x 1-3/4" u-bolts, four 5/16" flatwashers, and four 5/16" nuts. ***Do not tighten attaching hardware at this time.***
2. Place the lower support bar on the inside of the lower cross member on the front bumper and attach using one 5/16" x 1-1/8" x 1-3/4" u-bolt. ***Do not tighten attaching hardware at this time.***
3. Align the two holes on the winch up to the two holes on the roller hawse mount plate and the two center holes on the topside of the winch mount plate. Install one 5/16" x 1" bolt through the back hole. ***Do not tighten attaching hardware at this time.***
4. Next install one 5/16" x 1-1/4" bolt through the front holes and swing up the lower support bar to the bottom side of the winch mount plate.
5. Align the hole on the lower support bar up to the rear hole on the winch mount plate and secure with one 5/16" x 1" bolt and 5/16" nut.

Tighten mounting hardware at this time.

***CAUTION**

BE AWARE OF WHEN THE CABLE STOP CONTACTS THE ROLLER HAWSE AS CABLE IS WOUND IN.

FAILURE TO RELEASE MAY CAUSE DAMAGE TO WINCH PARTS OR TO THE ATV.

When using the winch to raise and lower a blade a cable stop must be installed.

Carefully raise the blade until the top of the push tube's are no closer than 1" anywhere on the ATV. Place the Cable Stop onto the Winch Cable up against the Winch Hawse. Secure the Cable Stop to the Winch Cable using the Cable Clamp Assembly as shown in the pictures below.

