

KAWASAKI

WINCH

MOUNT KIT

Installation

Instructions

KIT NUMBER: 20-2150



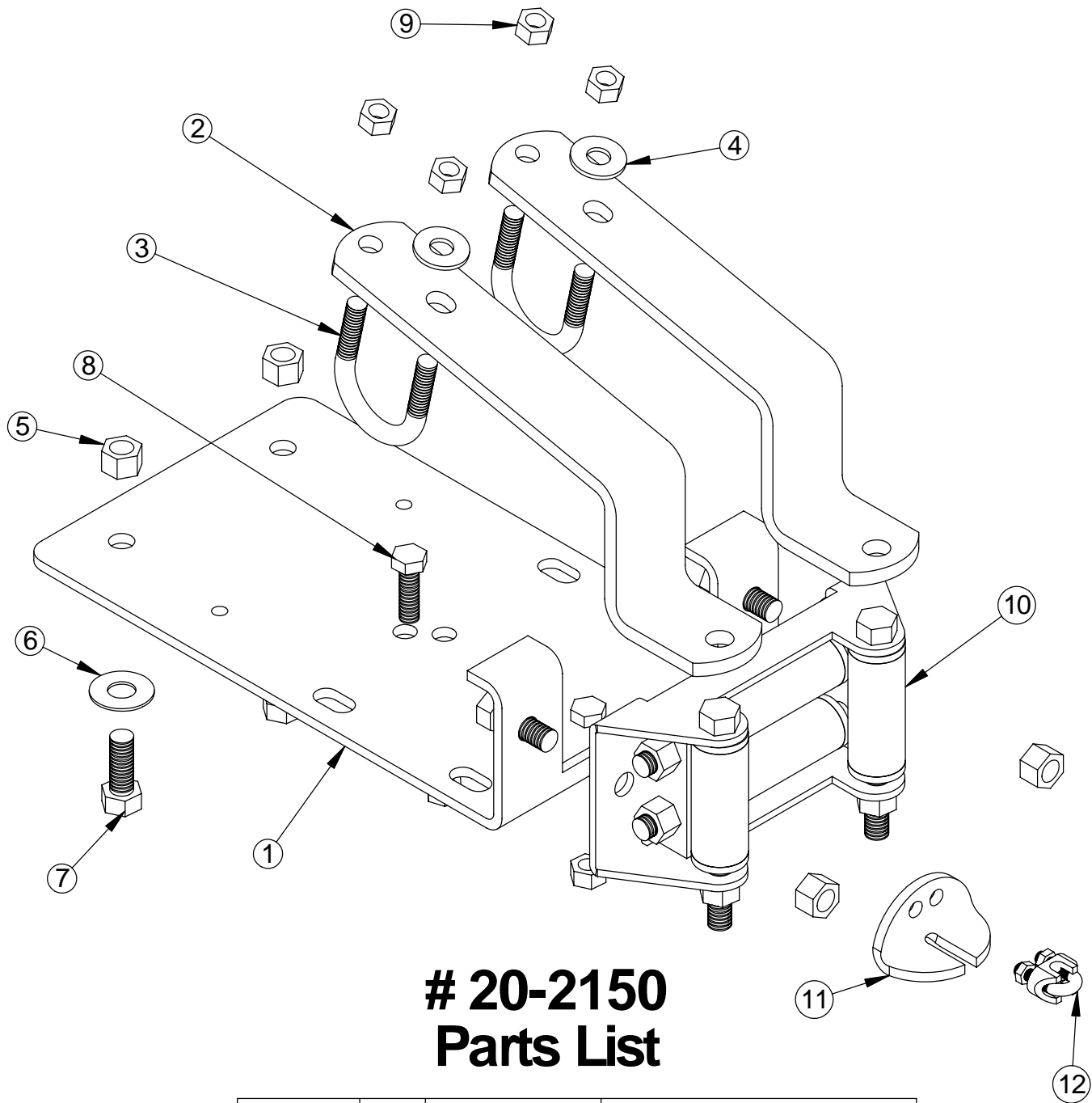
www.masterlockatwinch.com
Order: 866-835-0628
Phone: 712-338-2974
FAX: 800-245-7569
E-MAIL: masterlock@cyclecountry.com

ONE YEAR LIMITED WINCH MOUNT WARRANTY

For the period of one year from the purchase date Master Lock will replace for the original purchaser, free of charge, any part or parts, when found, upon examination by Master Lock, to be defective in material, workmanship, or both.

All transportation cost incurred by the purchaser in submitting the material to Master Lock for replacement under this warranty, must be borne by the purchaser. If Master Lock determines that the product must be returned to the factory for credit please call 1-866-835-0628 for an RMA number and shipping instructions.

The warranty does not apply to parts that have been damaged by accident, alteration, abuse, improper lubrication, normal wear, or other causes beyond Master Lock's control.



20-2150 Parts List

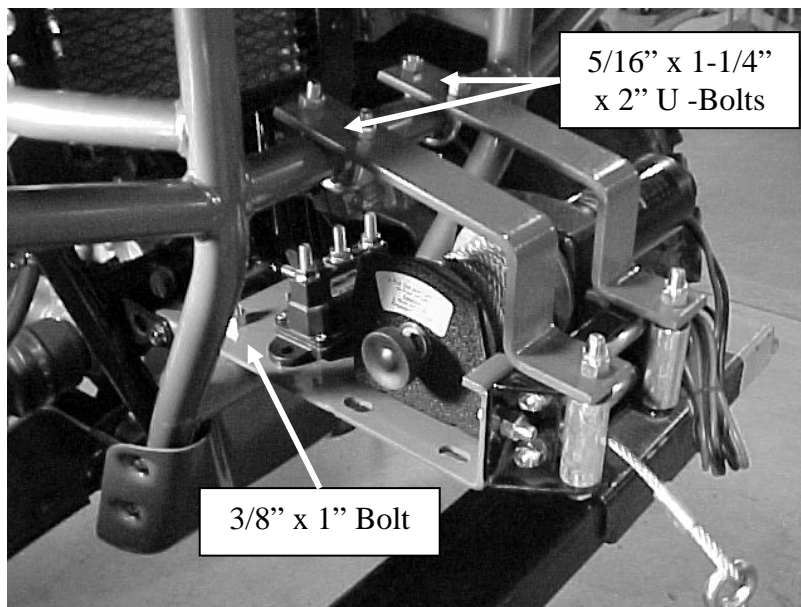
ITEM NO.	QTY.	PART NO.	DESCRIPTION
1	1	CYC3974	Roller Hawse Mount Plate
2	2	CYC3975	Bar, Upper Support
3	2	PUR1419	5/16" x 1-1/4" x 2" U-Bolt
4	2	PUR1244	5/16" Flat Washer
5	2	PUR1272	Nut 3/8" Nylock
6	2	PUR0250	3/8" Flat Washer
7	2	PUR1140	3/8" x 1" Bolt
8	2	PUR1155	5/16" x 1" Bolt
9	6	PUR1275	Nut 5/16" Nylock
10	1	11044	Roller Hawse Assembly
11	1	CYC0882	Cable Stop
12	1	PUR1606	3/16" Cable Clamp

Refer to the winch manual for winch mounting instructions.

** All directions referring to right and left are when the rider is sitting on the machine.

WINCH MOUNT INSTALLATION INSTRUCTIONS

1. Place the roller hawse mount plate into the lower center of the front bumper and align the two back holes up to the two existing holes on the bumper support. Attach using the two 3/8" x 1" bolts, 3/8" flatwashers and 3/8" nylock nuts provided with this kit. ***Do not tighten attaching hardware at this time.***
2. Align the roller hawse assembly up to roller hawse mount plate and secure using two 3/8" x 1" bolts. ***Do not tighten attaching hardware at this time.***



3. Remove the two 3/8" x 4-1/2" bolts from the roller hawse assembly and align the two upper support bars to the roller hawse assembly. Reinstall the 3/8" x 4-1/4" bolts to the roller hawse assembly. *See picture above.* Do not reattach nuts until winch cable has been fed through roller hawse. See instructions after winch mounting instructions. ***Do not tighten attaching hardware at this time.***

4. Using the two 5/16" x 1-1/4" x 2" u-bolts, 5/16 flatwashers and nylock nuts, attach the two upper support bars to the front bumper. *See picture on previous page.*
5. Using two 5/16" x 1" bolts, mount the winch to the roller hawse mount plate, using the two holes left of center. Be sure that when the winch is mounted to the ATV, the winch motor is on the **LEFT** side of the machine.
6. Remove one of the long rollers and the two side rollers and feed the winch cable through the roller hawse. Reinstall the rollers and be sure rollers move freely.

***CAUTION**

BE AWARE OF WHEN THE CABLE STOP CONTACTS THE ROLLER HAWSE AS CABLE IS WOUND IN.

FAILURE TO RELEASE MAY CAUSE DAMAGE TO WINCH PARTS OR TO THE ATV.

When using the winch to raise and lower a blade a cable stop must be installed.

Carefully raise the blade until the top of the push tube's are no closer than 1" anywhere on the ATV. Place the Cable Stop onto the Winch Cable up against the Winch Hawse. Secure the Cable Stop to the Winch Cable using the Cable Clamp Assembly as shown in the pictures below.

