

# HONDA

## WINCH KIT

### Installation Instructions

**KIT NUMBER: 20-1081**

# Master Lock®



[www.masterlockatwinch.com](http://www.masterlockatwinch.com)

Order: 866-835-0628

Phone: 712-338-2974

FAX: 800-245-7569

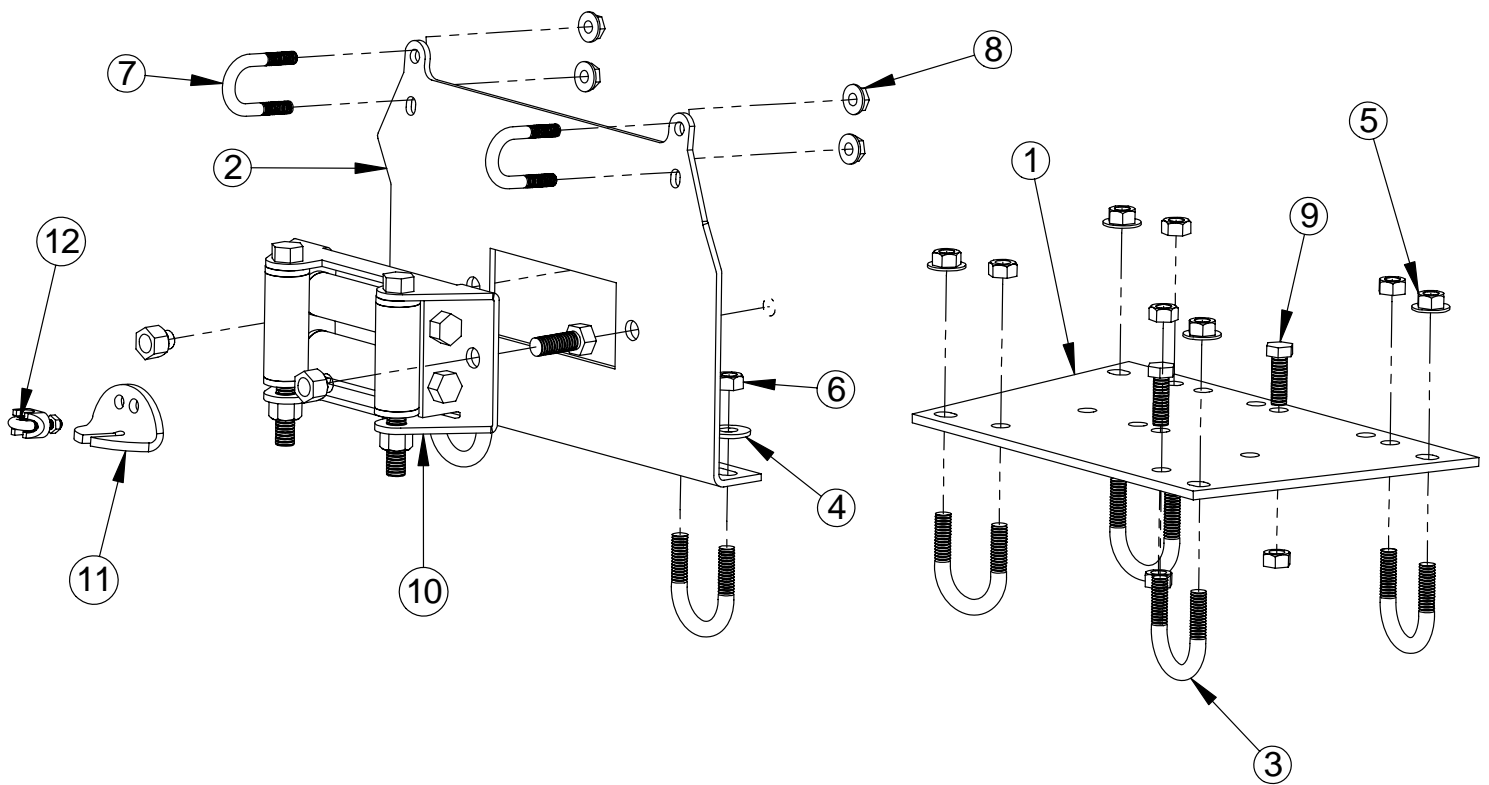
E-MAIL: [masterlock@cyclecountry.com](mailto:masterlock@cyclecountry.com)

## **ONE YEAR LIMITED WINCH MOUNT WARRANTY**

For the period of one year from the purchase date Master Lock will replace for the original purchaser, free of charge, any part or parts, when found, upon examination by Master Lock, to be defective in material, workmanship, or both.

All transportation cost incurred by the purchaser in submitting the material to Master Lock for replacement under this warranty, must be borne by the purchaser. If Master Lock determines that the product must be returned to the factory for credit please call 1-866-835-0628 for an RMA number and shipping instructions.

The warranty does not apply to parts that have been damaged by accident, alteration, abuse, improper lubrication, normal wear, or other causes beyond Master Lock's control.



## # 20-1081 Parts List

ITEM NO.	QTY.	PART NO.	DESCRIPTION
1	1	CYC4791	Winch Mount Plate
2	1	CYC4946	Roller Haws Mount
3	6	PUR1421	5/16" x 1-1/8" x 1-3/4" U-Bolt
4	4	PUR1244	5/16" Flat Washer
5	4	PUR1274	5/16" Flange Nylock Nut
6	10	PUR1275	5/16" Nylock Nut
7	2	PUR1414	1/4" x 3/4" x 1 1/2" U-Bolt
8	4	PUR1264	1/4" Flange Nylock Nut
9	2	PUR1155	5/16" x 1" Bolt
10	1	11044	Roller Haws Assembly
11	1	CYC0882	Cable Stop
12	1	PUR1606	3/16" Cable Clamp

**Refer to the winch manual for winch mounting instructions.**

\*\*Some components of this kit may be already assembled. All directions referring to right and left are when the rider is sitting on the machine.

**KIT #20-1081**

**WINCH MOUNT INSTALLATION INSTRUCTIONS**

1. Using the two 5/16" x 1" bolts, mount the Winch using the Right set of holes on the center of the Winch Mount Plate. The Winch should be mounted so that the Winch Motor is to the vehicles Left side and the cable spooled so that it will feed in or out between the bottom side of the drum spool and the Winch base. Make sure the Winch motor clears the headlight's backside cover.
2. Remove Plastic Bumper Guard
3. Carefully slide the Winch Mount Plate up behind the headlights of the ATV. Set the Winch Mount Plate onto the two Mainframe Tubes. **(See picture below).** Secure the Winch Mount Plate to the ATV using four of the 5/16" x 1-1/8" x 1-3/4" U-Bolts.



4. Remove the two 1/4" x 3/4" x 1-1/2" U-bolts from the Roller Hawse Mount and position it behind the front brush guard tubes. **(See picture below)**. Reinstall the U-bolts and loosely tighten the Nylock Nuts.



5. Remove the two 5/16" x 1-1/8" x 1-3/4" U-Bolts from the Roller Hawse Mount and position it above the lower Brush Guard tubes. **(See picture above)**. Reinstall the U-Bolts and loosely tighten the Nylock Nuts.
6. Carefully tighten the four U-Bolts connecting the Roller Hawse Mount to the Brush Guard tubes.
7. Check that all hardware is installed correctly.
8. Reinstall the plastic bumper guard.
9. Remove one of the long roller hawse bolts and move roller enough to allow the winch cable hook end to pass through the roller hawse. Reinstall the roller and hardware to make sure that the bolt is not too tight that would result in causing the roller to bind.
10. Mount the Roller Hawse Assembly to the Roller Hawse Mount using the 3/8" x 1" Bolts and the 3/8" nylock nuts.

**When using the winch to raise and lower a blade a cable stop must be installed.**

Carefully raise the blade until the top of the push tube's are no closer than 1" anywhere on the ATV. Place the Cable Stop onto the Winch Cable up against the Winch Hawse. Secure the Cable Stop to the Winch Cable using the Cable Clamp Assembly as shown in the pictures below.

