



www.masterlockatwinch.com
Order: 866-835-0628
Phone: 712-338-2974
FAX: 800-245-7569
E-MAIL: masterlock@cyclecountry.com

HONDA

WINCH KIT

Installation Instructions

KIT NUMBER: 20-1070

Master Lock®



www.masterlockatwinch.com

Order: 866-835-0628

Phone: 712-338-2974

FAX: 800-245-7569

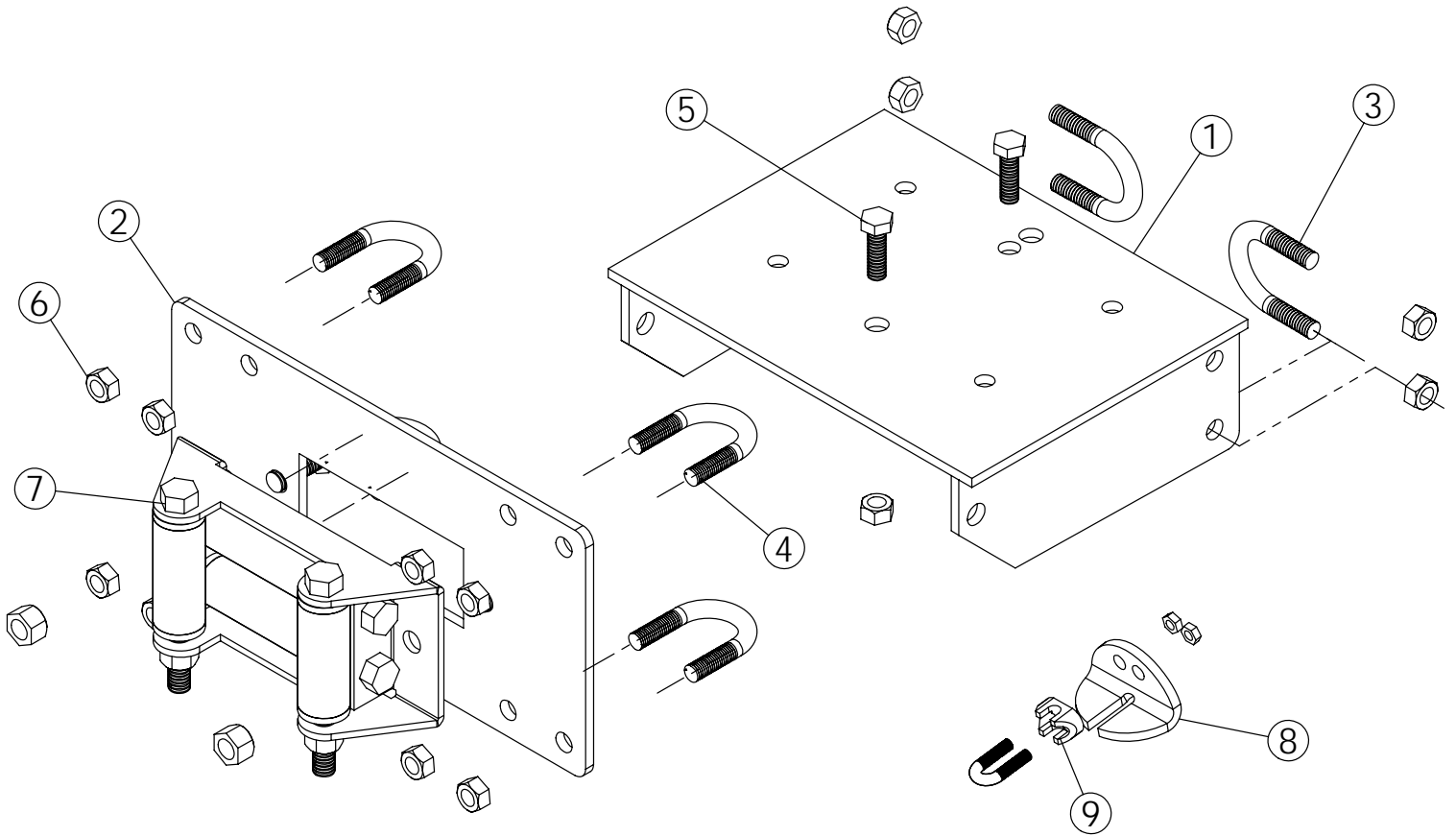
E-MAIL: masterlock@cyclecountry.com

ONE YEAR LIMITED WINCH MOUNT WARRANTY

For the period of one year from the purchase date Master Lock will replace for the original purchaser, free of charge, any part or parts, when found, upon examination by Master Lock, to be defective in material, workmanship, or both.

All transportation cost incurred by the purchaser in submitting the material to Master Lock for replacement under this warranty, must be borne by the purchaser. If Master Lock determines that the product must be returned to the factory for credit please call 1-866-835-0628 for an RMA number and shipping instructions.

The warranty does not apply to parts that have been damaged by accident, alteration, abuse, improper lubrication, normal wear, or other causes beyond Master Lock's control.



#20-1070 Parts List

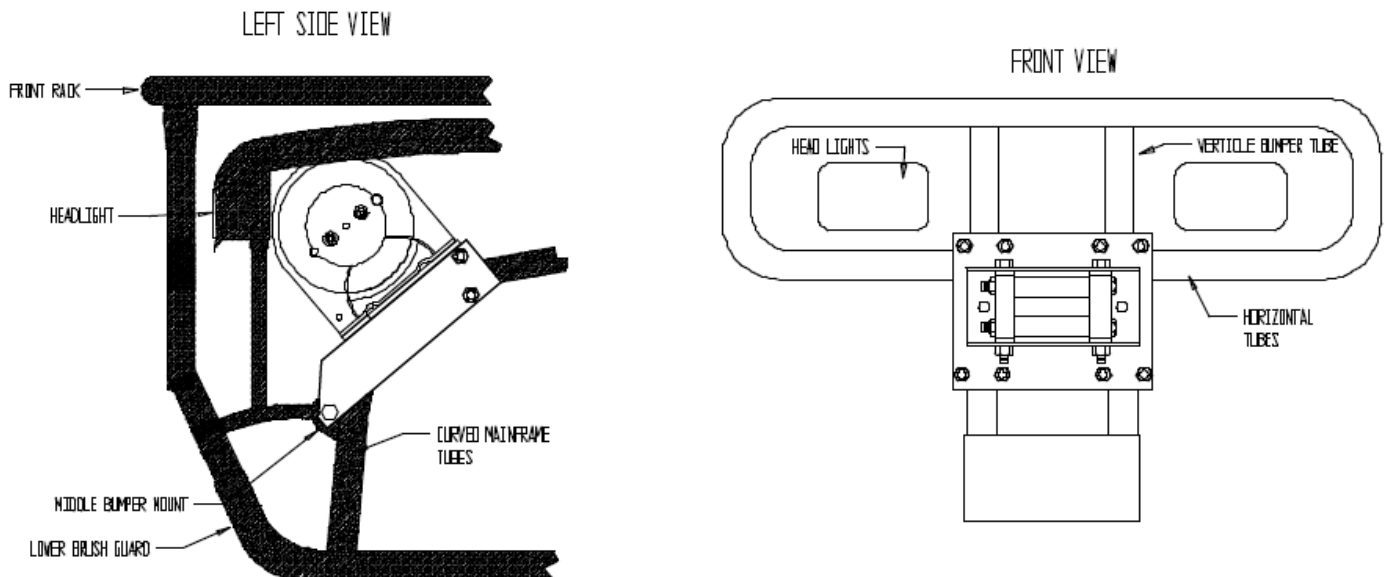
ITEM NO.	QTY.	PART NO.	DESCRIPTION
1	1	CYC2382	Winch Mount Bracket
2	1	CYC2381	Hawse Mount Plate
3	2	PUR1421	5/16" x 1-1/8" x 1-3/4" U-Bolt
4	4	PUR1418	5/16" x 1" x 1-3/4" U-Bolt
5	2	PUR1155	5/16" x 1" Bolt
6	14	PUR1275	5/16" Nylock Nut
7	1	11044	Roller Hawse Assembly
8	1	CYC0882	Cable Stop
9	1	PUR1606	3/16" Cable Clamp

Refer to the winch manual for winch mounting instructions.

ALL DIRECTIONS REFERRING TO THE RIGHT OR LEFT ARE WHEN THE OPERATOR IS SITTING ON THE MACHINE.

KIT #20-1070 WINCH MOUNT INSTALLATION INSTRUCTIONS

1. Remove the two Middle Bumper Mount Bolts. See lower left diagram below. Slide the Winch Mount up under the plastic front so the Winch Mount rests on the two curved Mainframe Tubes. Maneuver the Winch Mount so the front hole in the Winch Mount lines up with the middle Bumper Tube Mounts. See lower left diagram below.



2. Using the two 5/16" x 1-1/8" x 1-3/4" U-bolts secure the Winch Mount to the Curved Mainframe Tubes. Secure the Bottom of the Winch Mount to the Middle Bumper Mounts using the two Middle Bumper Mount bolts.
3. Mount the Hawse Mount Plate to the front Bumper Tubes. Place the two upper 5/16" x 1" x 1-3/4" U-bolts on the top side of the lower horizontal tubes. Place the Winch Roller Hawse onto the U-bolts and secure with the Nylock Nuts. Secure the bottom of the Hawse Mount Plate to the ATV tubes using the other two U-bolts. See upper right diagram.
4. Using the 5/16" x 1" Bolts, mount the Winch to the Winch Mount Bracket. Be sure that when the Winch is mounted to the ATV the Winch Motor is on the **OPERATOR'S LEFT** side of the machine.

5. Remove one of the long rollers and the two side rollers and feed the winch cable through the roller hawse. Reinstall the rollers and be sure rollers move freely. Attach the Roller Hawse to the Hawse Mount Plate using the 3/8" x 1" Bolts and Nylock Nuts.

Tighten all hardware at this time.

When using the winch to raise and lower a blade a cable stop must be installed.

Carefully raise the blade until the top of the push tube's are no closer than 1" anywhere on the ATV. Place the Cable Stop onto the Winch Cable up against the Winch Hawse. Secure the Cable Stop to the Winch Cable using the Cable Clamp Assembly as shown in the pictures below.

