

Master Lock®



www.masterlockatwinch.com

Order: 866-835-0628

Phone: 712-338-2974

FAX: 800-245-7569

E-MAIL: masterlock@cyclecountry.com

HONDA

**WINCH
MOUNT KIT**

**Installation
Instructions**

KIT NUMBER: 20-1042



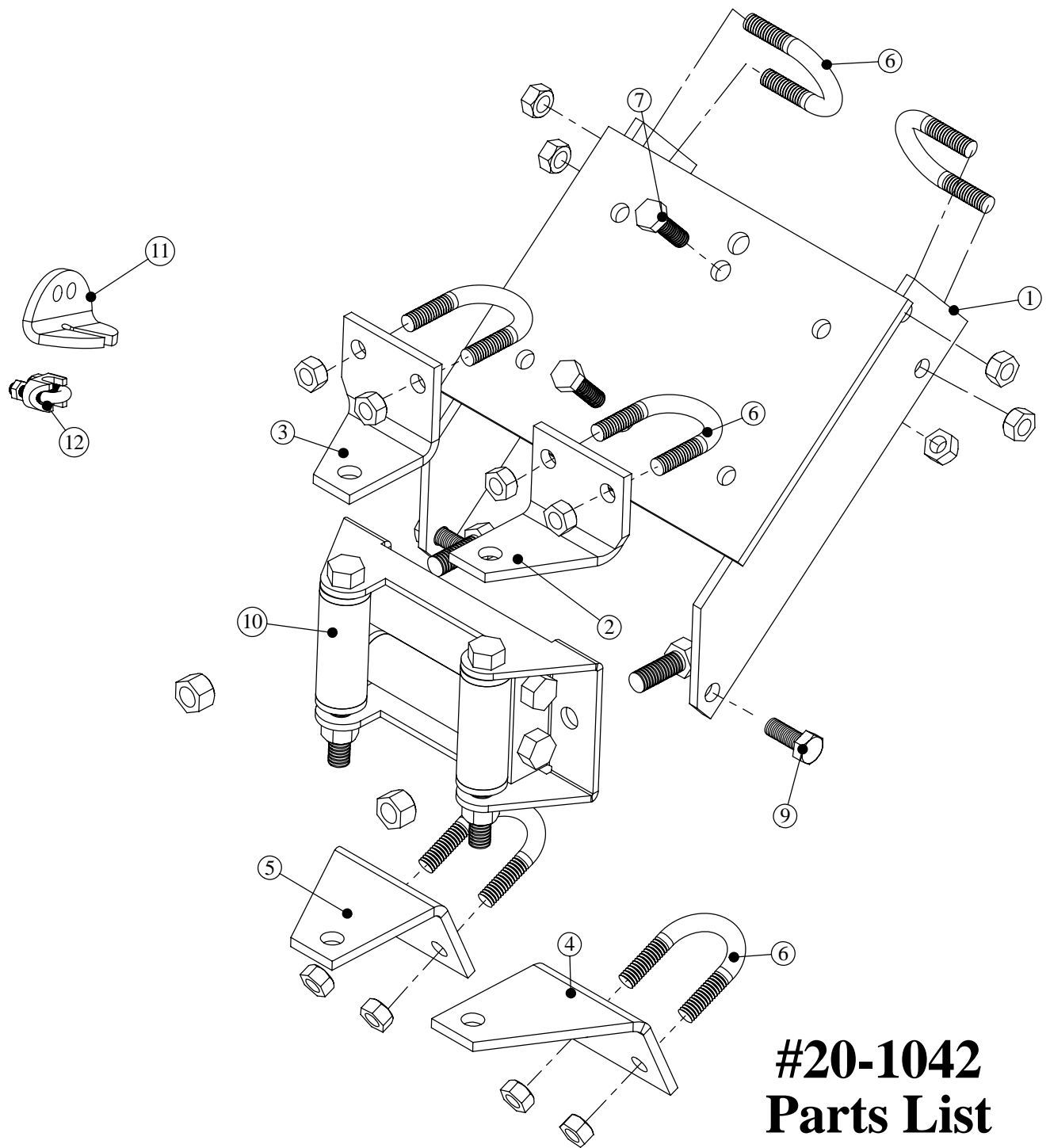
www.masterlockatwinch.com
Order: 866-835-0628
Phone: 712-338-2974
FAX: 800-245-7569
E-MAIL: masterlock@cyclecountry.com

ONE YEAR LIMITED WINCH MOUNT WARRANTY

For the period of one year from the purchase date Master Lock will replace for the original purchaser, free of charge, any part or parts, when found, upon examination by Master Lock, to be defective in material, workmanship, or both.

All transportation cost incurred by the purchaser in submitting the material to Master Lock for replacement under this warranty, must be borne by the purchaser. If Master Lock determines that the product must be returned to the factory for credit please call 1-866-835-0628 for an RMA number and shipping instructions.

The warranty does not apply to parts that have been damaged by accident, alteration, abuse, improper lubrication, normal wear, or other causes beyond Master Lock's control.



#20-1042 Parts List

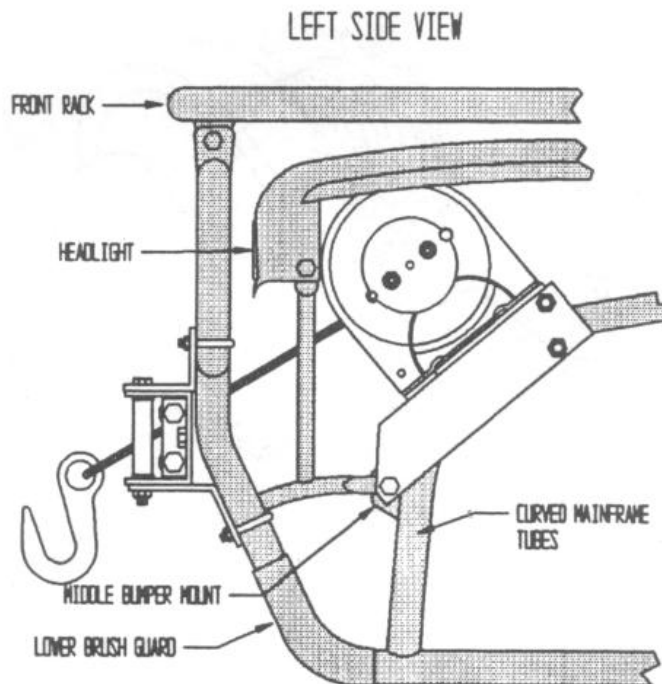
ITEM NO.	QTY.	PART NO.	DESCRIPTION
1	1	CYC0903	Winch Mount Plate
2	1	CYC0906	Upper Left Attaching Bracket
3	1	CYC0907	Upper Right Attaching Bracket
4	1	CYC0908	Lower Left Attaching Bracket
5	1	CYC0909	Lower Right Attaching Bracket
6	6	PUR1421	5/16" x 1-1/8" x 1-3/4" U-Bolt
7	2	PUR1155	5/16" x 1" Bolt
8	14	PUR1275	5/16" Nylock Nut
9	2	PUR1311	8 x 20 Metric Bolt
10	1	11044	Roller Hawse Assembly
11	1	CYC0882	Cable Stop
12	1	PUR1606	3/16" Cable Clamp

**Some components of this kit may be already assembled. All directions referring to right and left are when the rider is sitting on the machine.

WINCH MOUNT INSTALLATION INSTRUCTIONS

#20-1042

1. Remove the ATV's Front Bumper Assembly and both inside headlight covers.
2. Mount Winch to Winch Mount Plate.
3. Attach the Winch to the Winch Mount Plate using the supplied 5/16" x 1" bolts and 5/16" Nylock Nuts. The Winch mounts in the two centrally located holes on top of the Winch Mount Plate. Be sure to position the motor of the winch towards the **LEFT** side of the ATV.



4. Carefully slide the Winch and Winch Mount Plate up underneath of the plastic front so that the Winch rests on the two curved mainframe tubes and so that the front hole of the Winch Mount Plate lines up with the Middle Bumper Mount of the ATV.

5. Using the two supplied 8 x 20 Metric Bolts, hand tighten the front holes of the Winch Mount Plate to the Middle Bumper Mount.
6. Using the supplied 5/16" x 1-1/8" x 1-3/4" U-Bolts, attach the Winch Mount Plate to the Two Curved Mainframe Tubes. U-Bolts are placed from the **INSIDE. Tighten Securely. Remove the 8 x 20 Metric Bolts from the Front Holes. Reinstall the Front Bumper using the 8 x 20 Metric Bolts in the Middle Tube Mount where the Winch Mount Plate attaches. TIGHTEN ALL BOLTS SECURELY.**
7. Using two 5/16" x 1-1/8" x 1-3/4" U-Bolts, attach the Upper Left and Upper Right Roller Hawse Attaching Brackets to the vertical Bumper Tubes just above the horizontal cross tube of the bumper. **Do not tighten at this time.** Using the remaining two 5/16" x 1-1/8" x 1-3/4" U-Bolts, attach the Lower Left and Lower Right Hawse Attaching Brackets to the vertical Bumper Tubes. **Do not tighten at this time.**
8. Remove the two vertical bolts and rollers and one of the horizontal bolts and roller from Roller Hawse Frame and feed the Winch Cable through the Roller Hawse. Position the Roller Hawse Frame between the Upper & Lower Attaching Brackets and reinstall rollers. Make sure rollers move freely. **Tighten U-Bolts at this time.**

***CAUTION**

**BE AWARE OF WHEN THE CABLE STOP CONTACTS THE ROLLER HAWSE AS CABLE IS WOUND IN.
FAILURE TO RELEASE MAY CAUSE DAMAGE TO WINCH PARTS OR TO THE ATV.**

When using the winch to raise and lower a blade a cable stop must be installed.

Carefully raise the blade until the top of the push tube's are no closer than 1" anywhere on the ATV. Place the Cable Stop onto the Winch Cable up against the Winch Hawse. Secure the Cable Stop to the Winch Cable using the Cable Clamp Assembly as shown in the pictures below.

